

### Seamless Background #4

1



Create a new image (the example is 100x100 pixels). Fill the background with gray.

2



Paint white lines into a new layer. Stay clear of the edges.

3



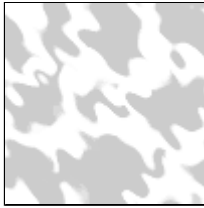
Select **Filter>>Other>>Offset**. Offset the layer by half its width and height, and select the Wrap Around option.

4



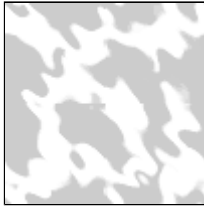
Paint more lines into the layer.

5

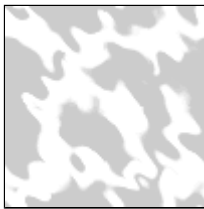



Select **Filter>>Distort>>Ripple**. Experiment with the settings. In the example, the settings were:

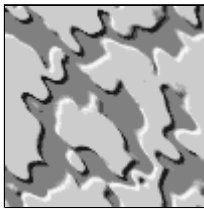
- Amount = 416
- Size = Medium



Select **Filter>>Other>>Offset**. Again offset the layer by half its width and height, and select the Wrap Around option.



Use the Smudge tool  to soften any sharp edges in the middle.



Select **Filter>>Stylize>>Emboss**. Experiment with the highlight and depth of the texture. In the example, the settings were:

- Angle = 135°
- Height = 5 pixels
- Amount = 100%



Reduce the opacity of the layer. In the example, the opacity is 15%.





Save the background and you're done.



This tip comes from  
[ScreamDesign.Com](http://ScreamDesign.Com)